

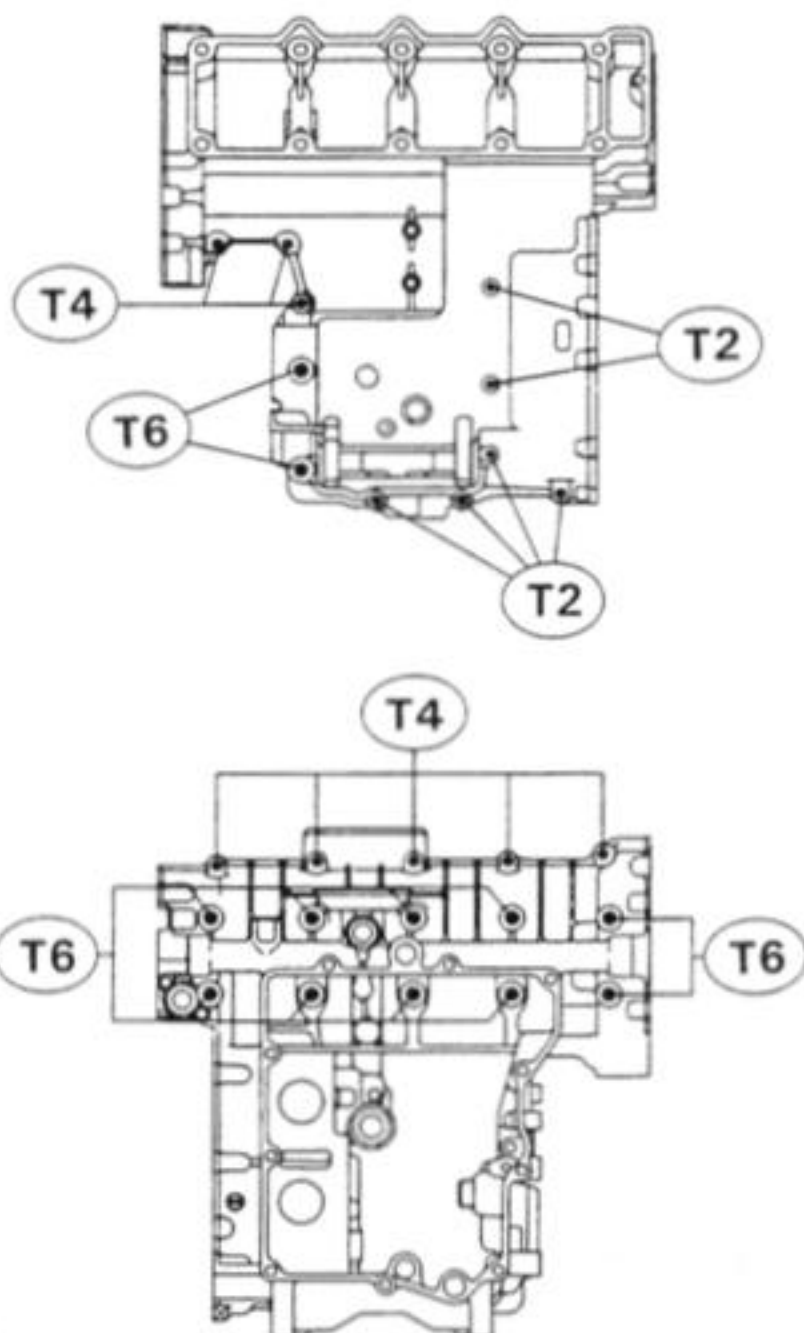
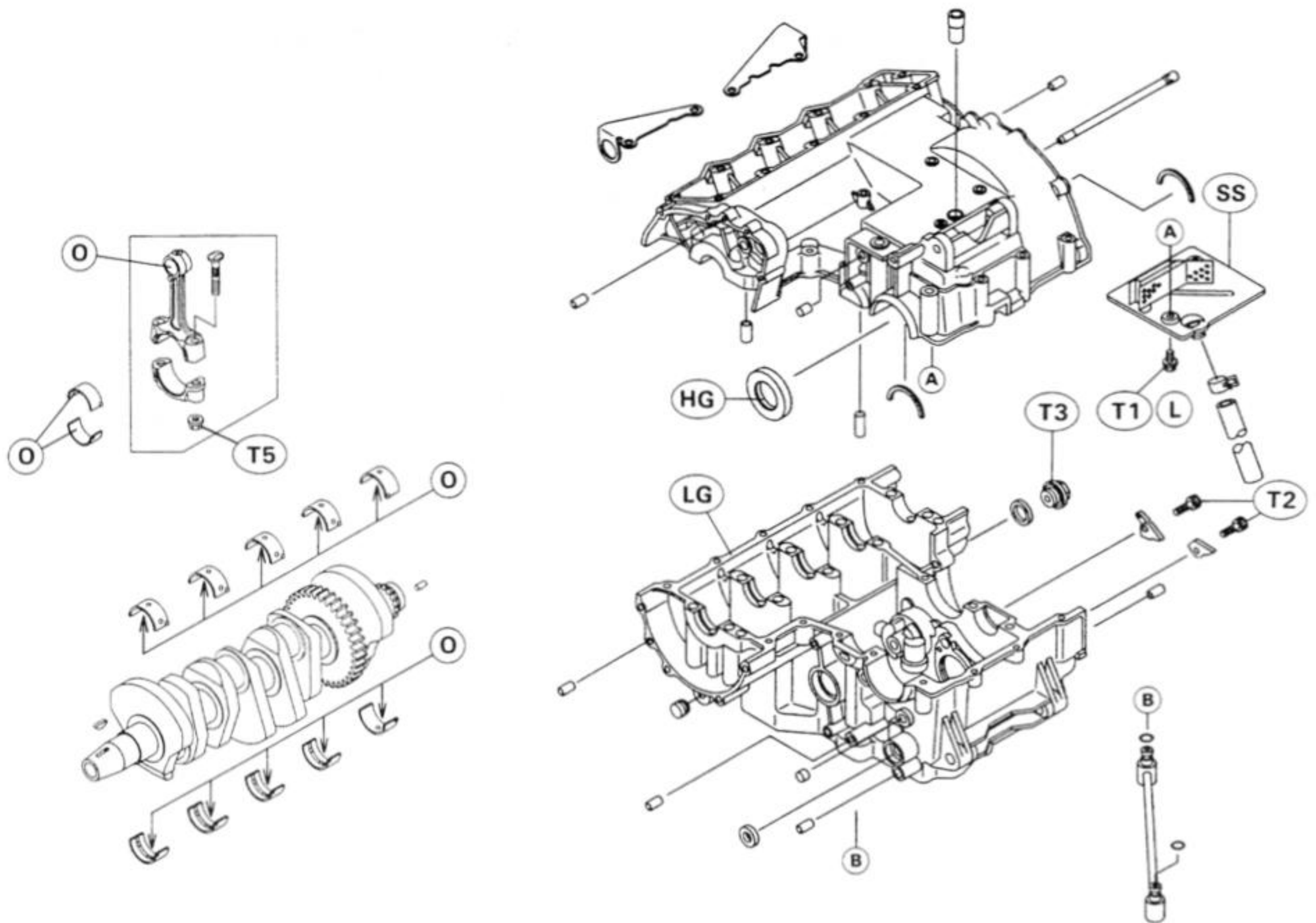
Crankshaft / Transmission

Table of Contents

Exploded View	8-2
Specifications	8-4
Special Tools	8-6
Sealant	8-6
Crankcase	8-7
Crankcase Assembly Note	8-7

8-2 CRANKSHAFT / TRANSMISSION

Exploded View



T1 : 9.8 N-m (1.0 kg-m, 7.0 ft-lb)

T2 : 12 N-m (1.2 kg-m, 8.5 ft-lb)

T3 : 15 N-m (1.5 kg-m, 11.0 ft-lb)

T4 : 20 N-m (2.0 kg-m, 14.5 ft-lb)

T5 : 25 N-m (2.6 kg-m, 19 ft-lb)

T6 : 27 N-m (2.8 kg-m, 20 ft-lb)

G : Apply grease.

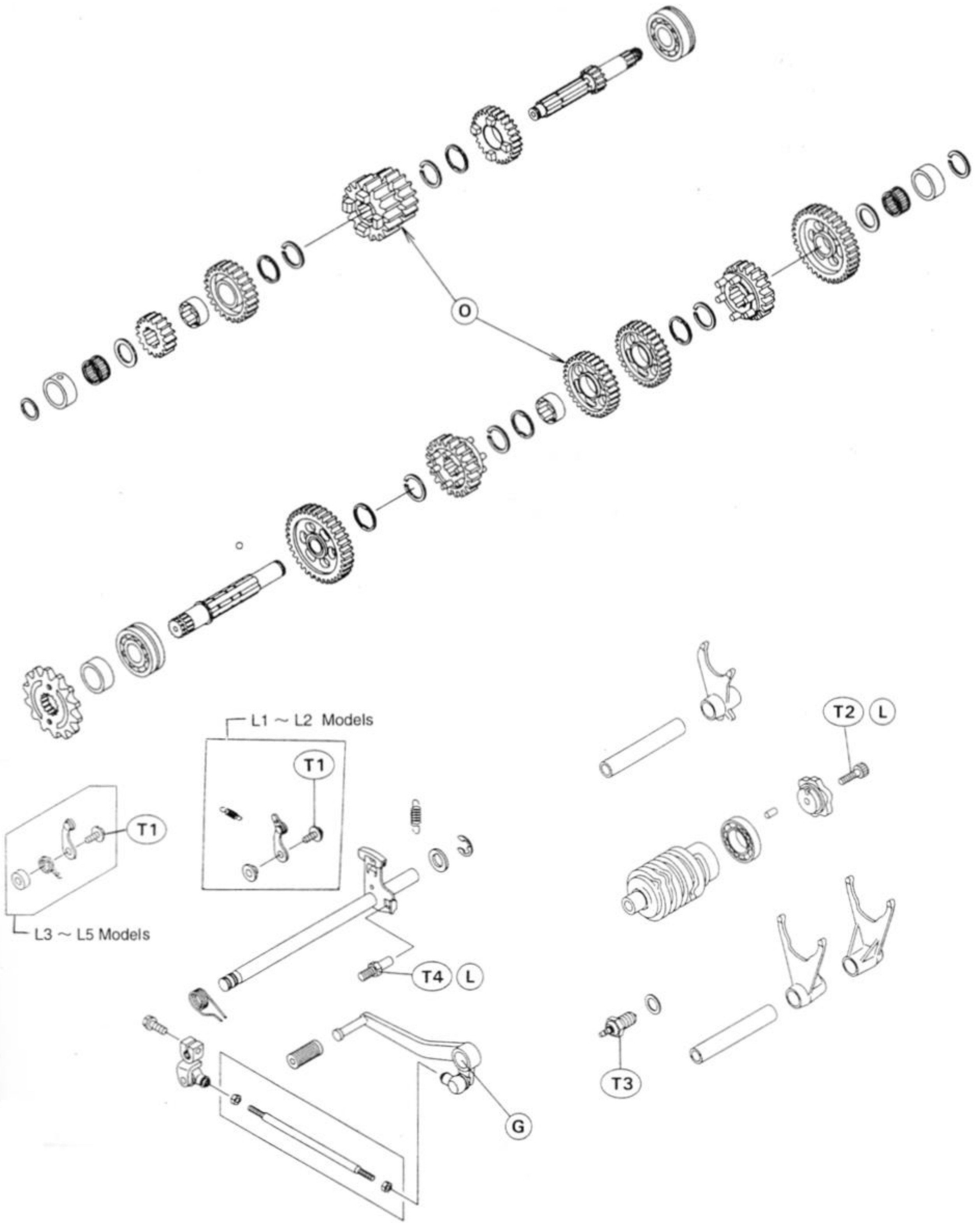
HG : Apply high temperature grease.

LG : Apply liquid gasket – black (Kawasaki Bond: 92104-1003) to the mating surface of the right and left crankcase halves.

L : Apply a non-permanent locking agent to the threads.

SS : Apply silicone sealant (Kawasaki Bond: 56019-120) to the gaskets and the threads.

O : Apply oil.



8-4 CRANKSHAFT / TRANSMISSION

Specifications

Item	Standard	Service Limit																					
Crankshaft, Connecting Rods:																							
Connecting rod big end side clearance	0.13 ~ 0.38 mm	0.60 mm																					
Connecting rod big end bearing insert/crankpin clearance	0.031 ~ 0.059 mm	0.10mm																					
Crankpin diameter:	29.984 ~ 30.000 mm	29.97 mm																					
Marking	None	- - -																					
	○	- - -																					
Connecting rod big end bore diameter:	33.000 ~ 33.016 mm	- - -																					
Marking	None	- - -																					
	○	- - -																					
Connecting rod big end bearing insert thickness:																							
	Brown	- - -																					
	Black	- - -																					
	Blue	- - -																					
Connecting rod big end bearing insert selection:																							
<table border="1"> <thead> <tr> <th rowspan="2">Con-Rod Big End Bore Diameter Marking</th> <th rowspan="2">Crankpin Diameter Marking</th> <th colspan="2">Bearing Insert</th> </tr> <tr> <th>Size Color</th> <th>Part Number</th> </tr> </thead> <tbody> <tr> <td>○</td> <td>None</td> <td>Blue</td> <td>92028-1492</td> </tr> <tr> <td>None</td> <td>None</td> <td rowspan="2">Black</td> <td rowspan="2">92028-1493</td> </tr> <tr> <td>○</td> <td>○</td> </tr> <tr> <td>None</td> <td>○</td> <td>Brown</td> <td>92028-1494</td> </tr> </tbody> </table>				Con-Rod Big End Bore Diameter Marking	Crankpin Diameter Marking	Bearing Insert		Size Color	Part Number	○	None	Blue	92028-1492	None	None	Black	92028-1493	○	○	None	○	Brown	92028-1494
Con-Rod Big End Bore Diameter Marking	Crankpin Diameter Marking	Bearing Insert																					
		Size Color	Part Number																				
○	None	Blue	92028-1492																				
None	None	Black	92028-1493																				
○	○																						
None	○	Brown	92028-1494																				
Crankshaft side clearance	0.05 ~ 0.20 mm	0.40 mm																					
Crankshaft runout	0.02 mm or less	0.05 mm TIR																					
Crankshaft main bearing insert, journal clearance	0.014 ~ 0.038 mm	0.08 mm																					
Crankshaft main journal diameter:	29.984 ~ 30.000 mm	29.96 mm																					
Marking	None	- - -																					
	1	- - -																					
Crankcase main bearing bore diameter:	33.000 ~ 33.016 mm	- - -																					
Marking	○	- - -																					
	None	- - -																					
Crankshaft main bearing insert thickness:																							
	Brown	- - -																					
	Black	- - -																					
	Blue	- - -																					

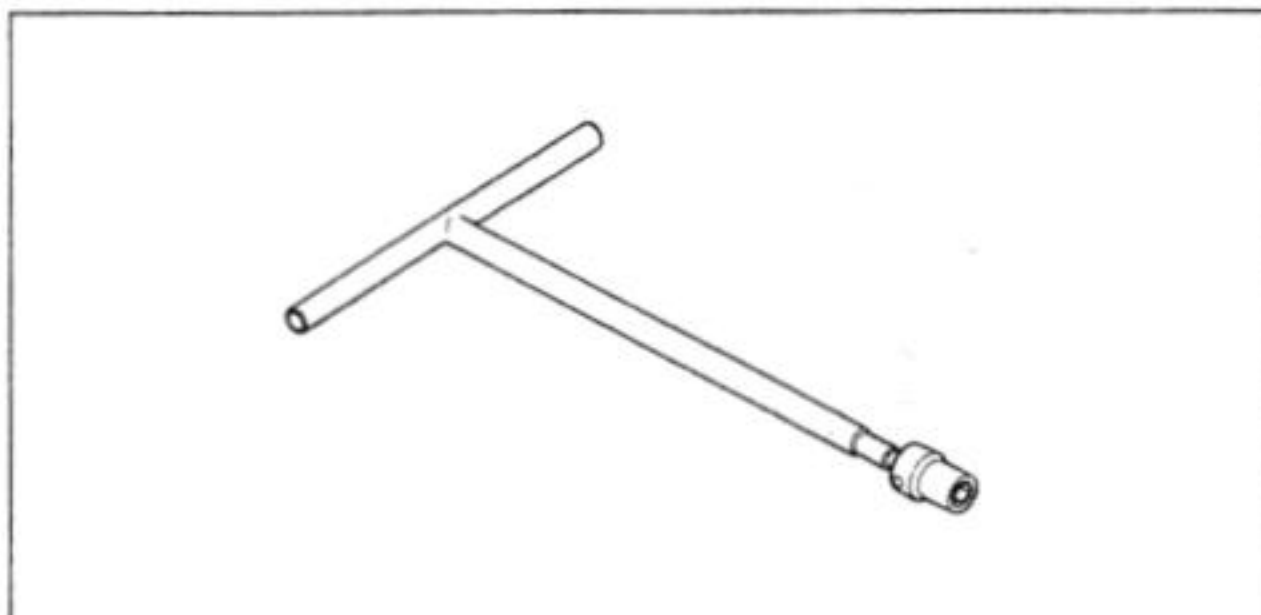
CRANKSHAFT / TRANSMISSION 8-5

Item	Standard	Service Limit
Crankshaft main bearing insert selection:		
Crankcase Main Bearing Bore Diameter Mark	Crankshaft Main Journal Diameter Mark	Bearing Insert*
		Size Color Part Number Journal Nos.
○	1	Brown
		92028-1418 5
		92028-1421 1, 2, 3, 4
○	None	Black
		92028-1417 5
None	1	92028-1420 1, 2, 3, 4
None	None	Blue
		92028-1416 5
		92028-1419 1, 2, 3, 4
*The bearing inserts for No. 5 has no oil groove.		
Transmission: Shift fork ear thickness Gear shift fork groove width Shift fork guide pin diameter Shift drum groove width	4.9 ~ 5.0 mm 5.05 ~ 5.15 mm 5.9 ~ 6.0 mm 6.05 ~ 6.20 mm	4.8 mm 5.3 mm 5.8 mm 6.3 mm

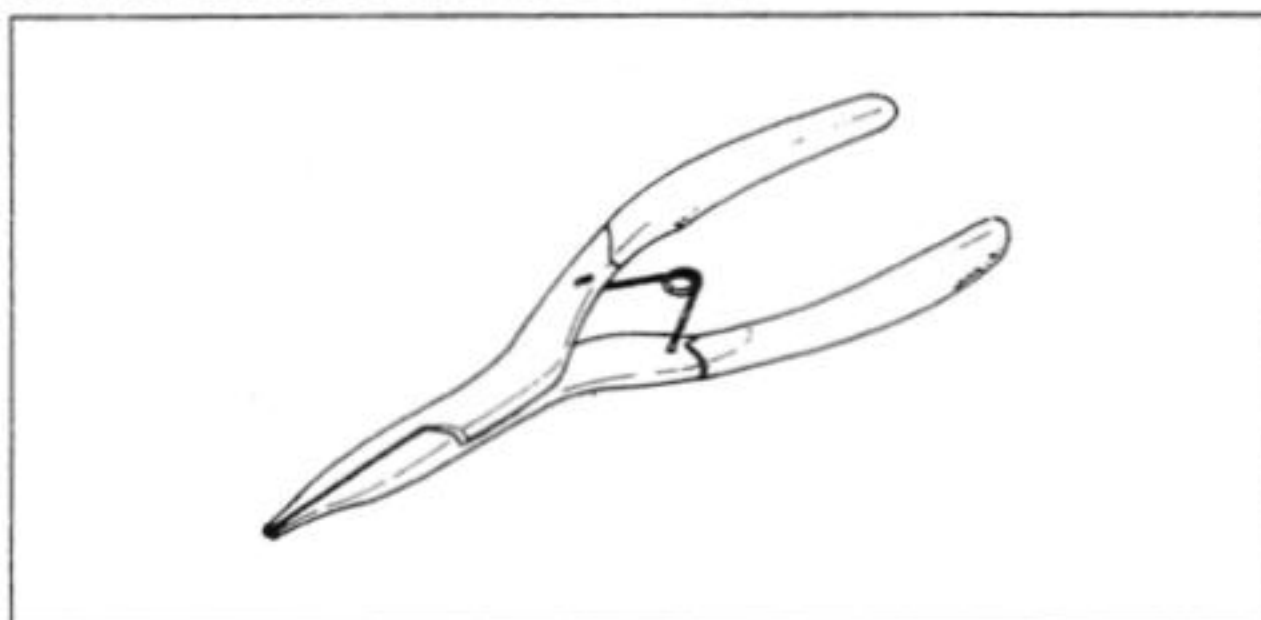
8-6 CRANKSHAFT / TRANSMISSION

Special Tools

Socket Wrench, Hex 8: 57001-1268



Outside Circlip Pliers: 57001-144

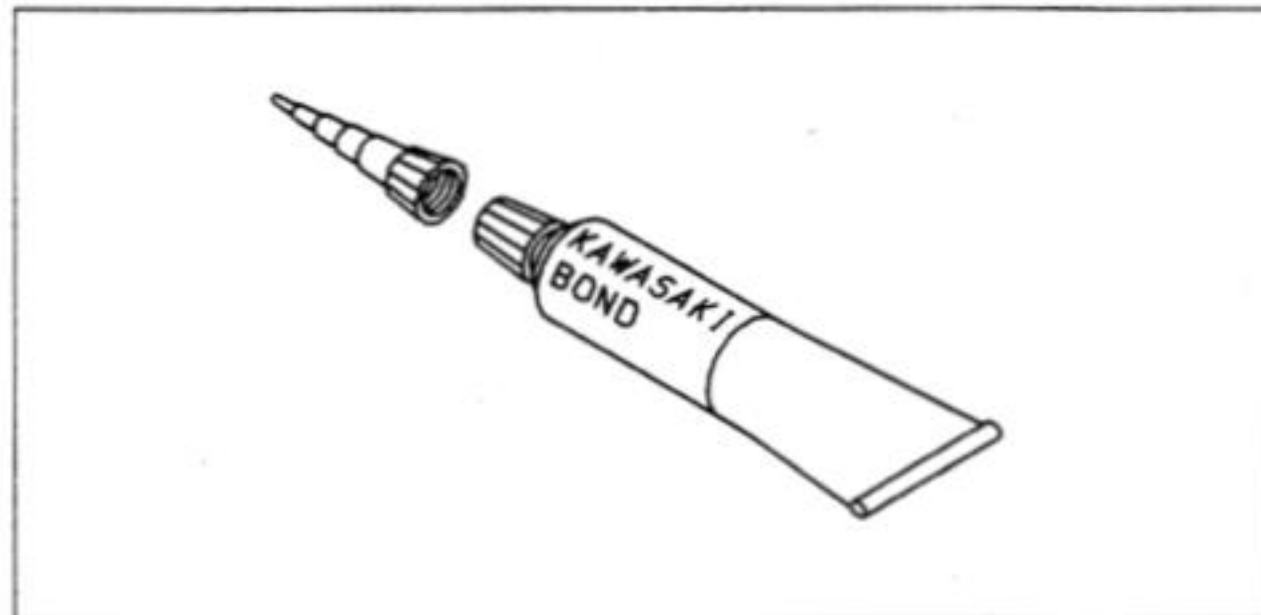


Bearing Driver Set: 57001-1129

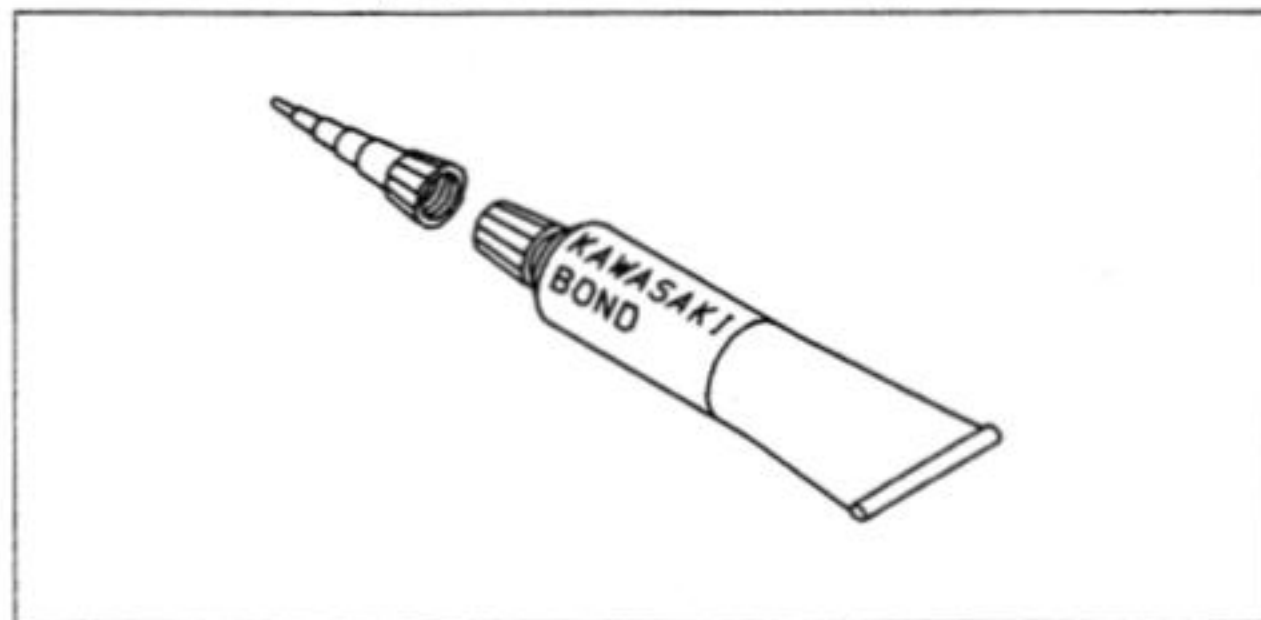


Sealant

Kawasaki Bond (Silicone Sealant): 56019-120



Kawasaki Bond (Liquid Gasket - Silver): 92104-002



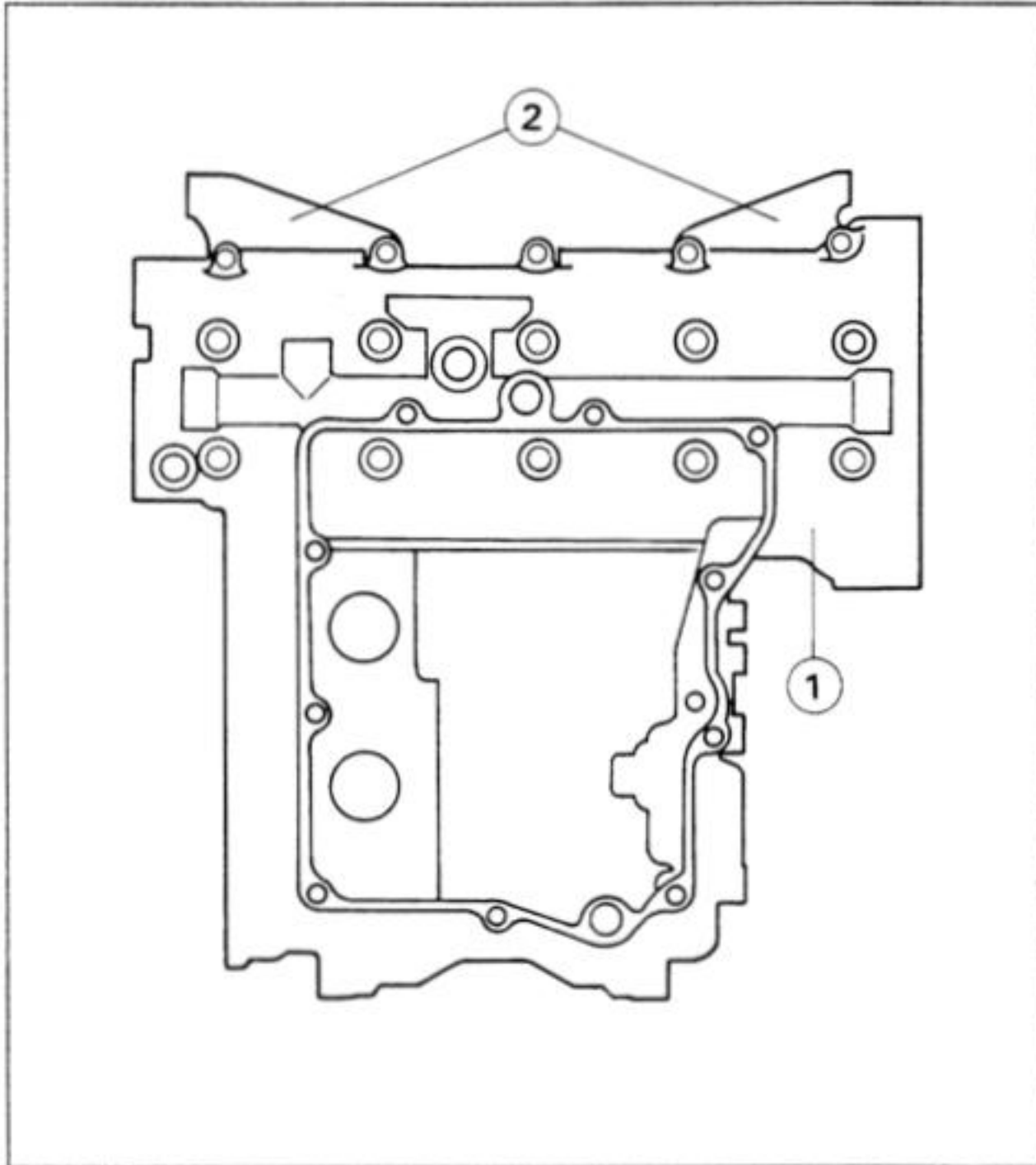
Crankcase

Crankcase Assembly Note

Refer to the base manual, noting the following.

The crankcase bolt seating surfaces on the radiator brackets should be cleaned with a high flash-point solvent before bolt tightening.

This prevent the bolt from getting over tightening on the plate.



1. Lower Crankcase

2. Radiator Bracket