

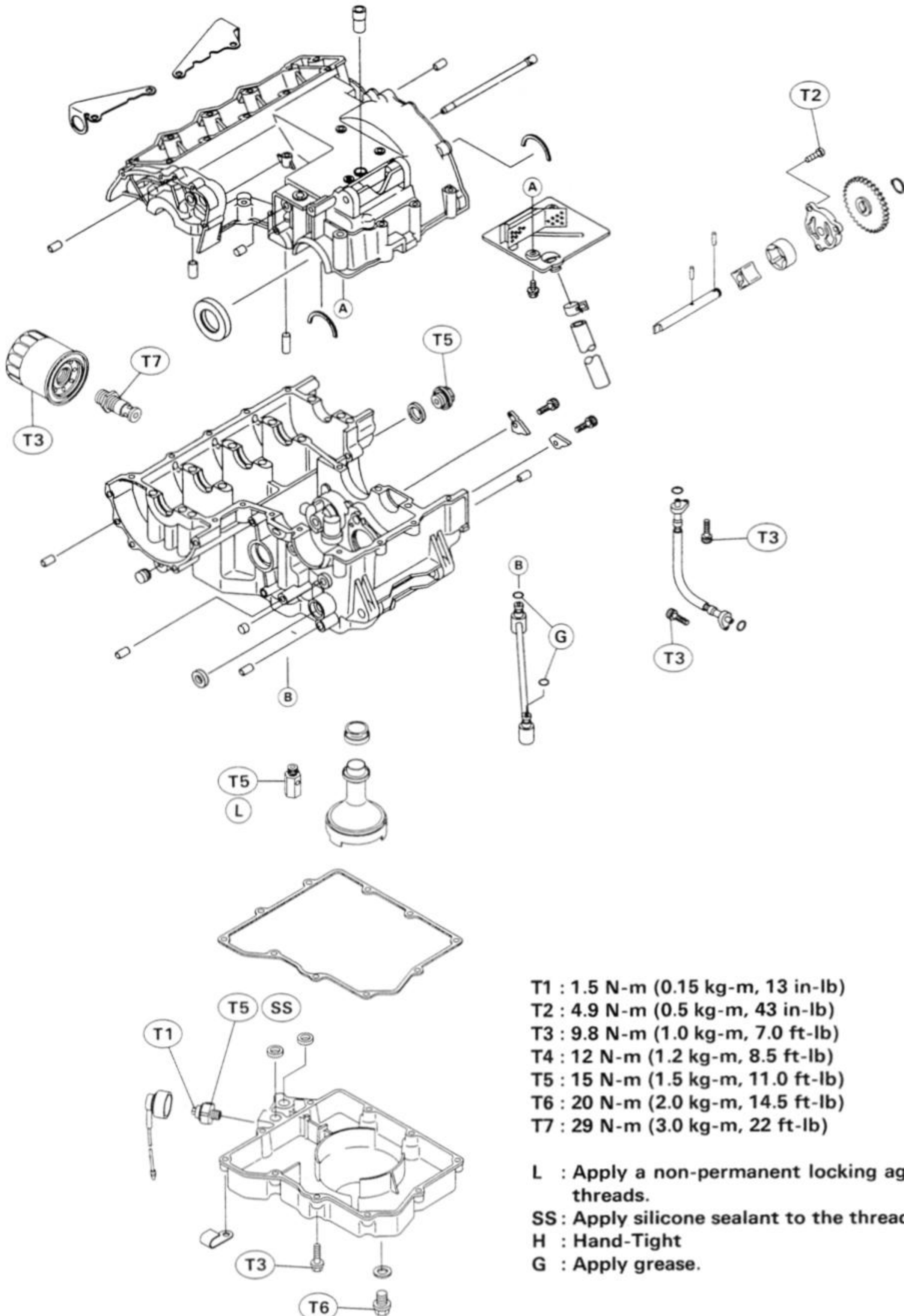
Engine Lubrication System

Table of Contents

Exploded View	6-2
Engine Oil Flow Chart.....	6-4
Specifications	6-6
Special Tools	6-6
Sealant.....	6-6

6-2 ENGINE LUBRICATION SYSTEM

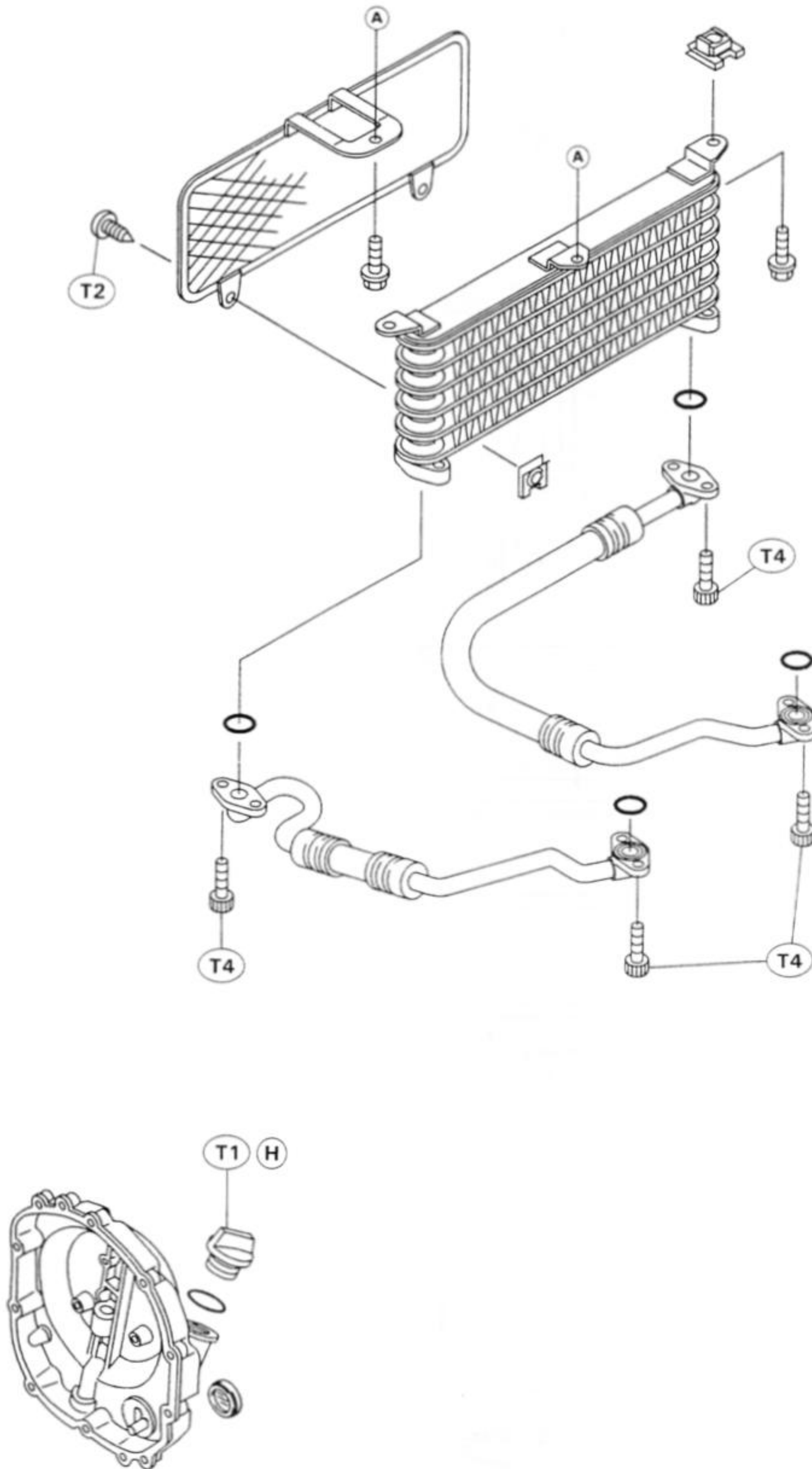
Exploded View



- T1 : 1.5 N-m (0.15 kg-m, 13 in-lb)
- T2 : 4.9 N-m (0.5 kg-m, 43 in-lb)
- T3 : 9.8 N-m (1.0 kg-m, 7.0 ft-lb)
- T4 : 12 N-m (1.2 kg-m, 8.5 ft-lb)
- T5 : 15 N-m (1.5 kg-m, 11.0 ft-lb)
- T6 : 20 N-m (2.0 kg-m, 14.5 ft-lb)
- T7 : 29 N-m (3.0 kg-m, 22 ft-lb)

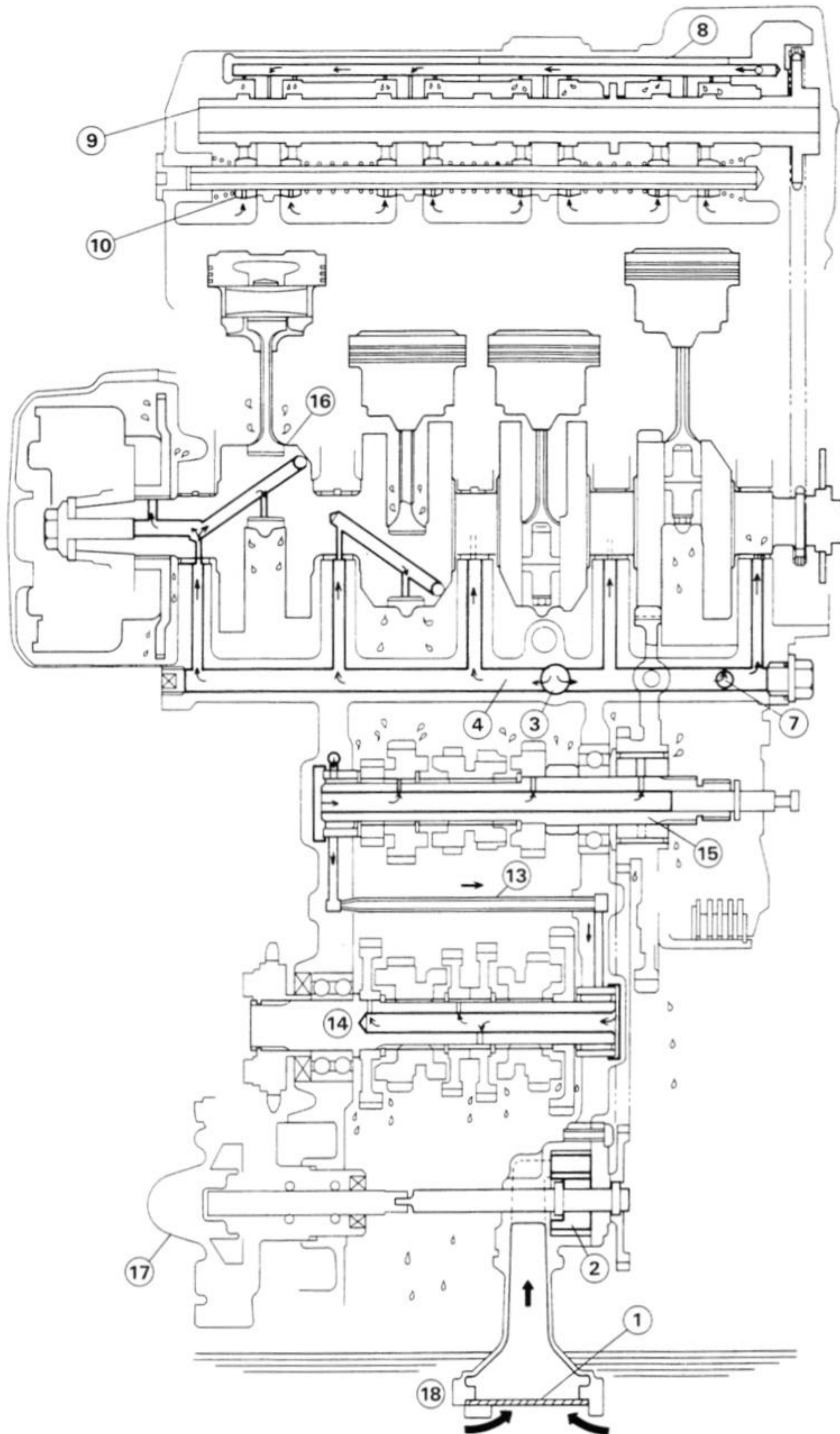
- L : Apply a non-permanent locking agent to the threads.
- SS: Apply silicone sealant to the threads.
- H : Hand-Tight
- G : Apply grease.

ENGINE LUBRICATION SYSTEM 6-3



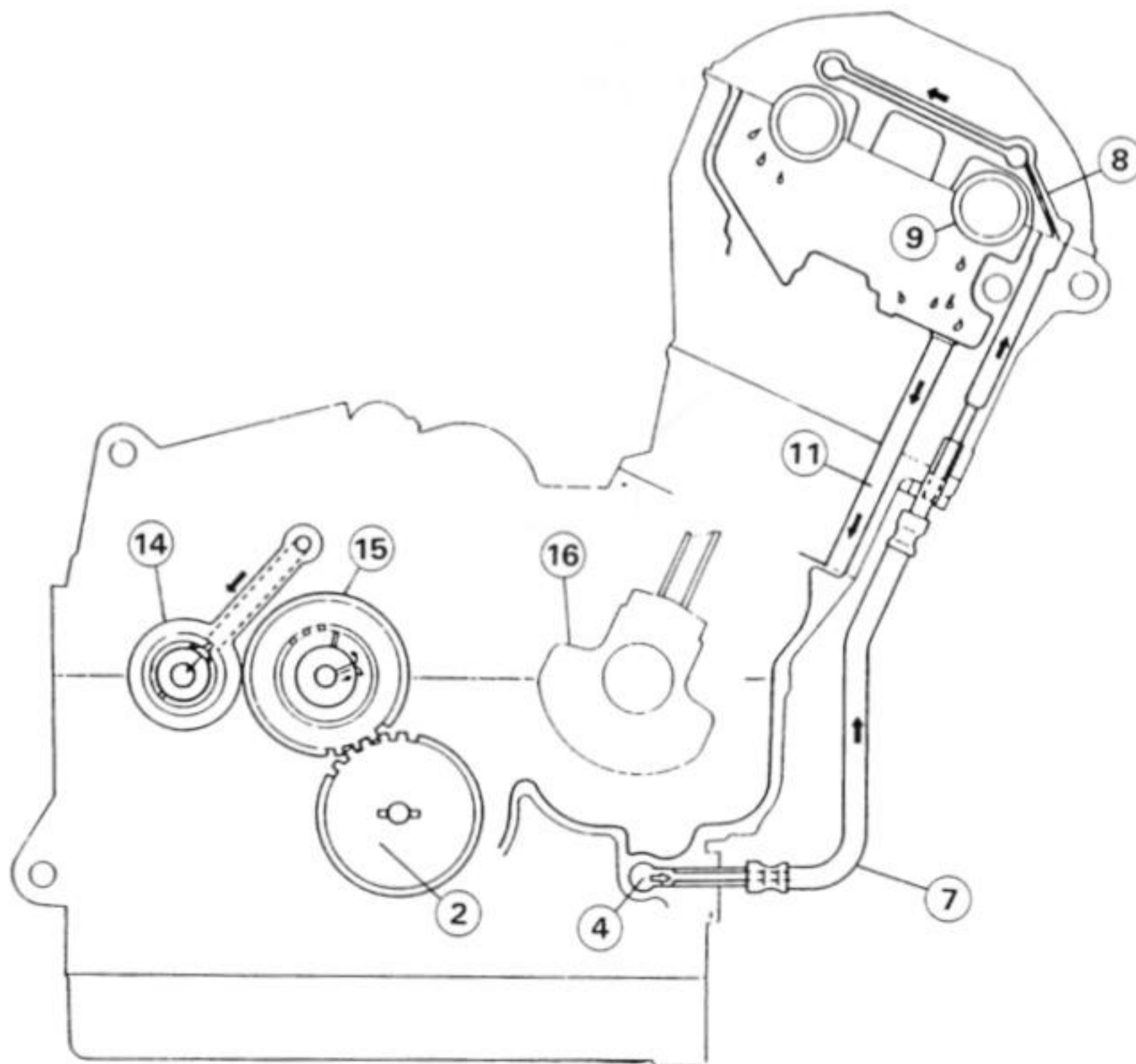
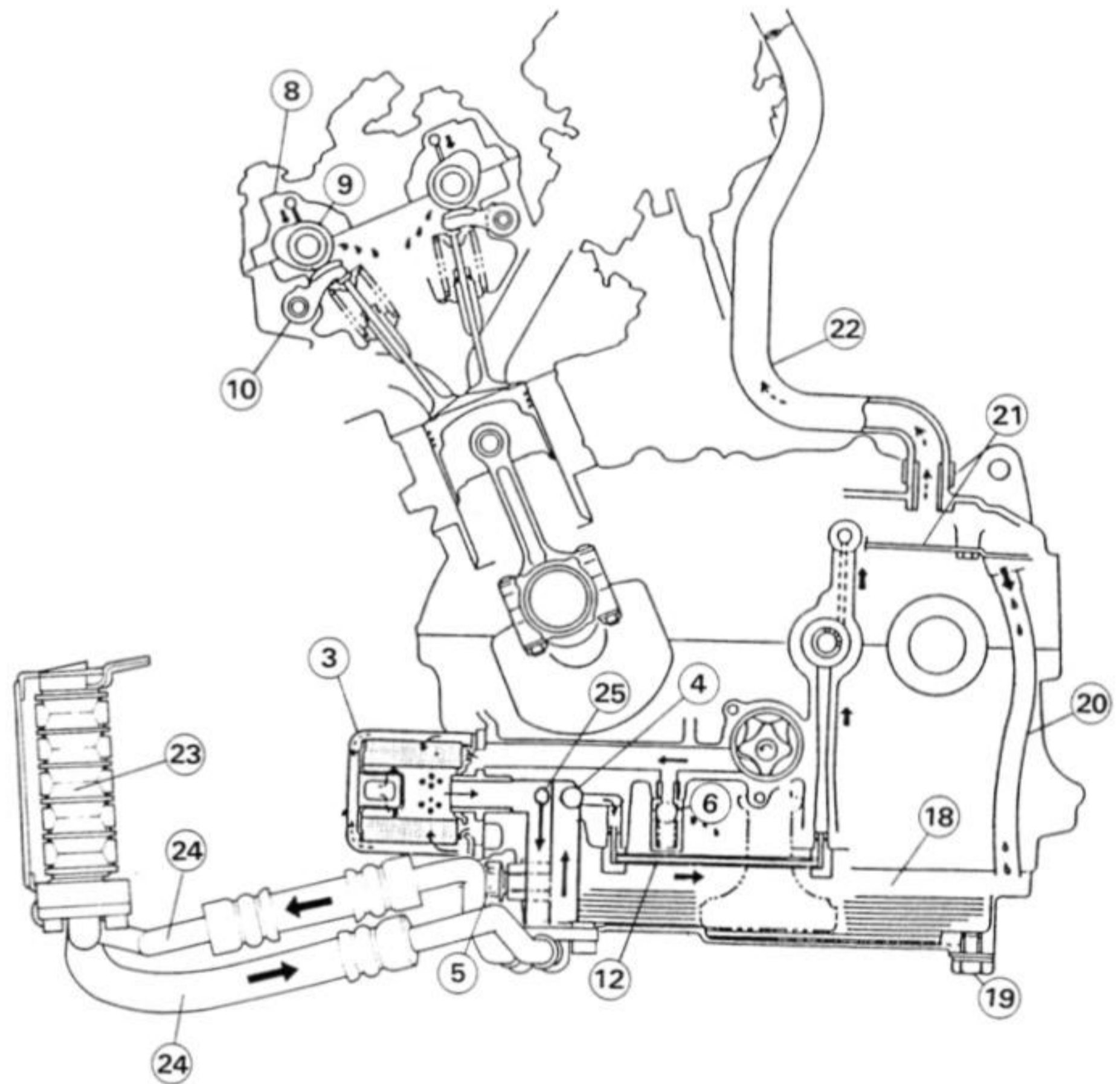
6-4 ENGINE LUBRICATION SYSTEM

Engine Oil Flow Chart



ENGINE LUBRICATION SYSTEM 6-5

1. Oil Pump Filter
2. Oil Pump
3. Oil Filter
4. Oil Passage
5. Oil Pressure Switch
6. Relief Valve
7. Oil Hose
8. Camshaft Bracket
9. Camshaft
10. Rocker Arm
11. Oil Return Passage
12. Oil Pipe (to Mission)
13. Oil Pipe (to Output Shaft)
14. Output Shaft
15. Drive Shaft
16. Crankshaft
17. Water Pump
18. Oil Pan
19. Oil Drain Plug
20. Oil Return Hose
21. Breather Plate
22. Breather Hose
23. Oil Cooler
24. Oil Cooler Hose
25. Bypass Hole



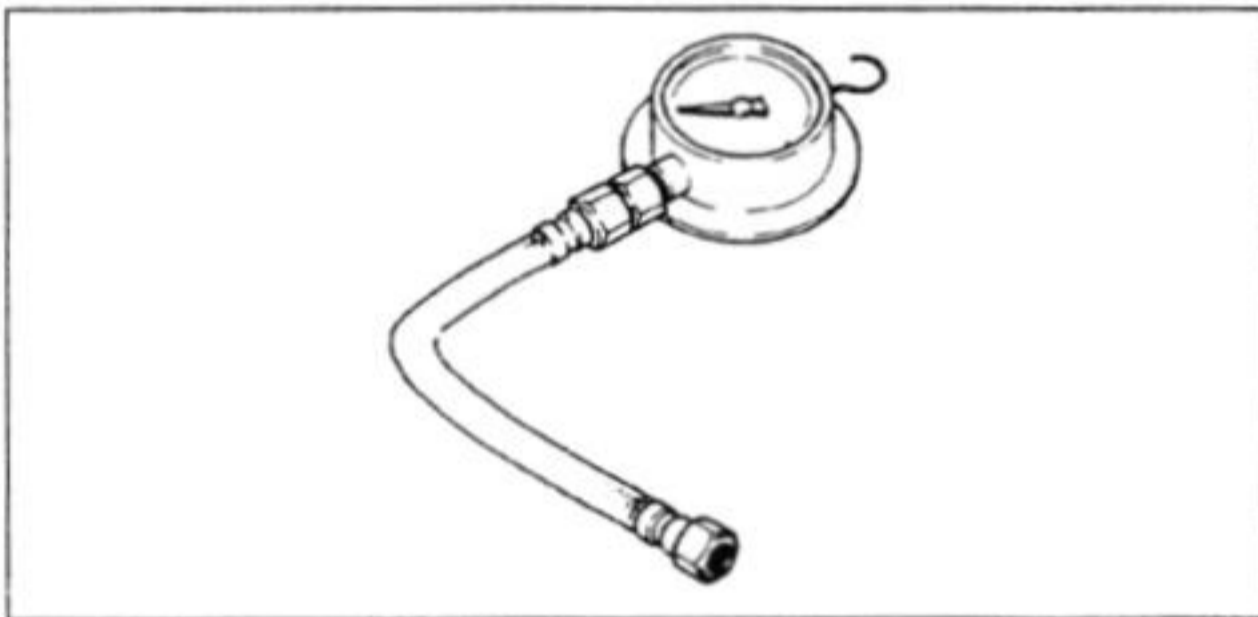
6-6 ENGINE LUBRICATION SYSTEM

Specifications

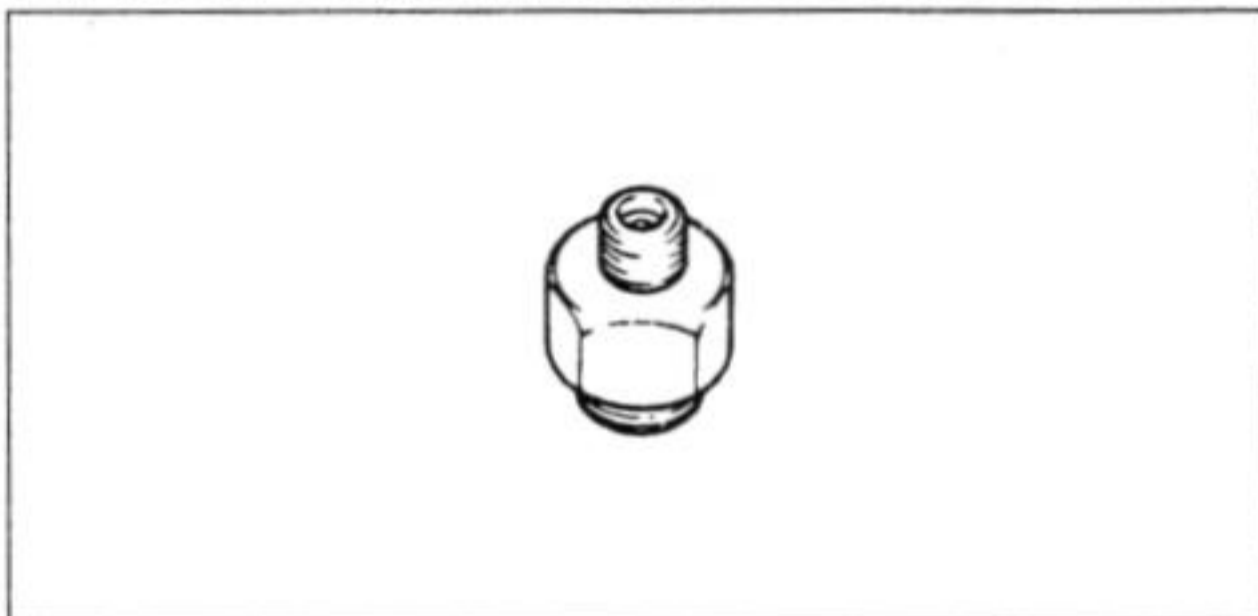
Item	Standard
Engine Oil: Grade Viscosity Capacity	SE or SF class SAE 10W-40 2.8 L (when filter is not removed) 3.0 L (when filter is removed)
Oil Pressure Measurement: Oil pressure @4 000 r/min (rpm), oil temp. 90°C (194°F)	216 ~ 275 kPa (2.2 ~ 2.8 kg/cm ² , 31 ~ 40 psi)

Special Tools

Oil Pressure Gauge, 10 kg/cm²: 57001-164



Oil Pressure Gauge Adapter, M18 x 1.5: 57001-1278



Sealant

Kawasaki Bond (Silicone Sealant): 56019-120

